

R N I B

Visibly Better

Spaces

Visibly Better Spaces Certification Summary



Introduction

Visibly Better Spaces is a comprehensive certification scheme developed by RNIB and is designed to provide participating organisation's staff with the skills and knowledge to design inclusive environments for people with sight loss either through refurbishment or in a brand-new building project.

The certification scheme provides structure and guidance to embed systems of inclusive building design into standard working practices ensuring work carried out, has cost benefits for the organisation, achieve required aesthetics whilst being supportive and inclusive for people with sight loss.



Why is it important?

Today there are more than 2 million people living with sight loss that affects their daily lives in the UK, with sight loss is set to increase dramatically by 2050 to over four million. [1]

Every day 250 people begin to lose their sight, Visibly Better Spaces support organisations to create environments where there are no barriers to people with sight loss through the embedding of systems and practices that not only support current clients but future clients who acquire sight loss.

Having to re-learn how to do everyday things is the reality of losing your sight. Although anyone who is at risk of falling it is important to be aware that people with sight loss are more likely to fall and have multiple falls than those without sight loss of a

similar age. Moving in and around buildings can become difficult as poor lighting levels, pattern carpets and other everyday hazards must be negotiated all impacting on the confidence and safety of people with sight loss to move around independently.

Inclusive design is better for everyone, ensuring the whole community can confidently access and navigate buildings of vital services such as hospitals and GP surgery's for example, and other areas of interest that include education, leisure, and work.

Visibly Better Spaces can provide buildings and asset staff with the skills and knowledge that can be used in their everyday working practices that can help reduce falls, promote independency and autonomy for people with sight loss.

References

1. RNIB (2019). "Key information and statistics on sight loss in the UK". London. Available at: <https://www.rnib.org.uk/professionals/knowledge-and-research-hub/key-information-and-statistics> (Accessed 16/07/21)

What is it?

Visibly Better Spaces provides clients with specific design skills in creating environments which are inclusive for people with sight loss meaning more people can enjoy using and moving around environments more easily.

As part of the certification scheme, Sight loss and the Built Environment workshop training will be provided to relevant staff who are responsible for the overall design and lighting of the building, whether it be for new build projects, cyclical refurbishment or maintenance.

The training is designed to achieve several benefits for participating organisations that include working towards national building regulations that are:

- Part M (national)
- Part K (National)
- BS8300 (National)
- Equality Act 2010 (National)

Much traditional interior design is not inclusive for people with sight loss but if we make minor changes to our design approach, we can create homes that are better for anyone and everyone.



How do I achieve it?

Participating organisations will achieve the RNIB Visibly Better Spaces award through relevant staff participating in training and apply learning in the workplace. Clients can evidence these practices through completing compulsory standards 1, 2 and 3.



The Visibly Better Spaces Certification three standards summary

Standard 1 (Sight loss and the built environment training for staff) -

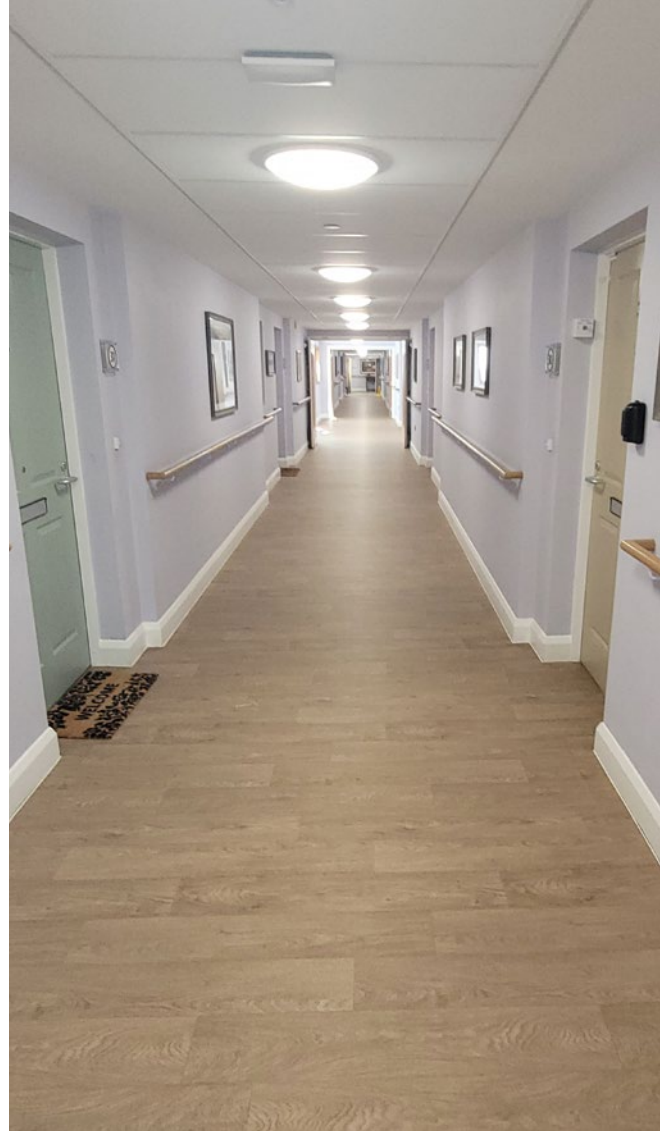
Participating organisation can give evidence of compulsory Sight loss and the built environment training for staff and show the incorporation of this training into its daily practices and organisation's induction and training policies.

Standard 2 (Internal physical environment) -

Participating site(s) has inclusive design features to maintain independence and minimise risks to people with sight loss. Compulsory Sight loss and the built environment training has been undertaken by staff responsible for refurbishment or new design project

Standard 3 (Wayfinding and signage)

- Participating site(s) has wayfinding clues, applications complimented with inclusive signage that supports navigation for a wide range of people, including those with sight loss.



What does a participating organisation get out of it?



Each client organisation will have continued support throughout the partnership to achieve the Visibly Better Spaces standards agreed. Access to consultancy via action plans and meetings will help negate inclusive design mistakes and keep costs low through reasonable design applications. Also, our Copyright publication on creating inclusive environments 'Building Sight' is available to clients only.

A key benefit of Certification is that upon gaining the award you will be permitted to display the RNIB Visibly Better Spaces logo on all your communications that include promotions, internal and external information such as website, letters and other relevant correspondence published by your organisation.

Furthermore, your respective building(s) that has achieved the RNIB Visibly Better Spaces award will be provided with a plaque that will represent excellent application of policy and practice for people with sight loss. RNIB is one of the UK's leading sight loss charities with a recognisable brand and a trusted partner amongst our clients.

Your organisation can hold and display the RNIB Visibly Better Spaces logo for up to three years. After three years we will re-assess practices to ensure the RNIB Visibly Better Spaces standards are maintained. If the re-assessment is successful, then your organisation can continue to use the logo and plaque for a further three years.



R N I B

Visibly Better

Spaces